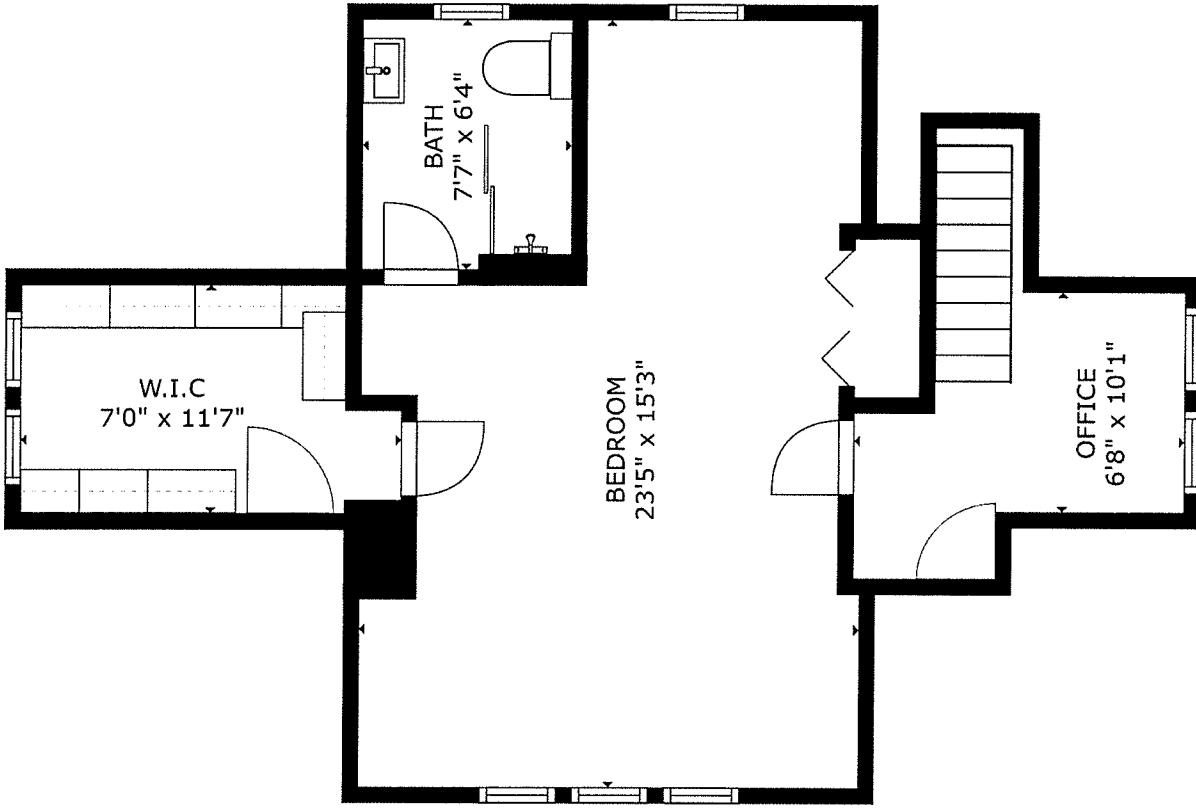


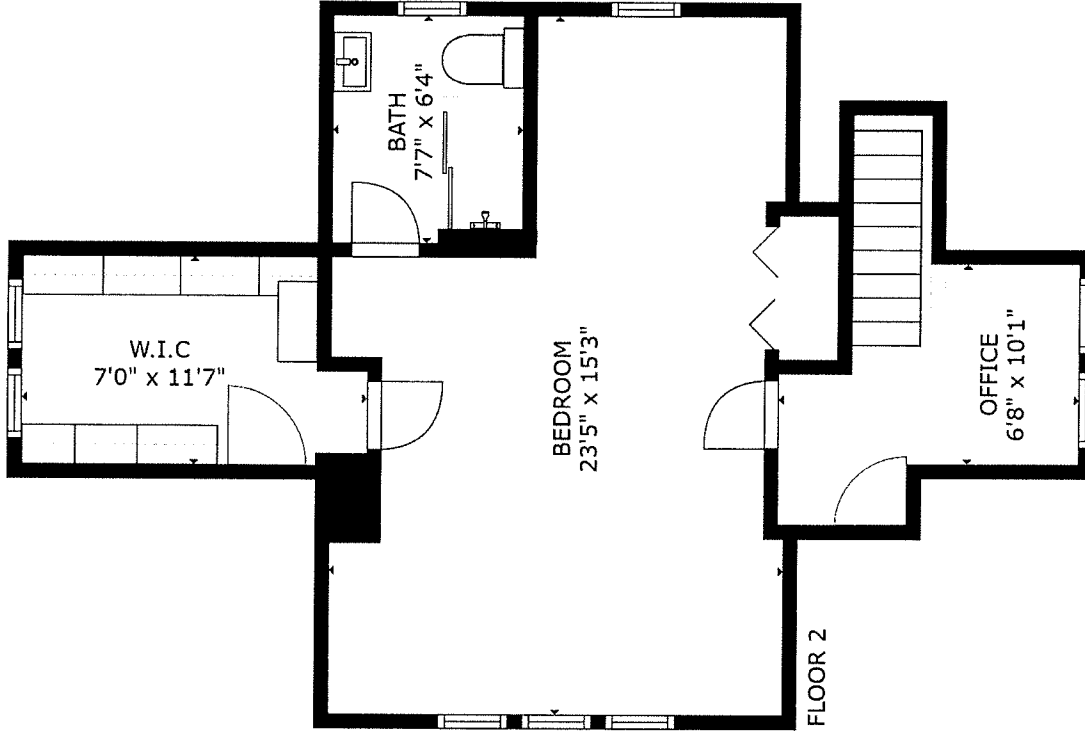
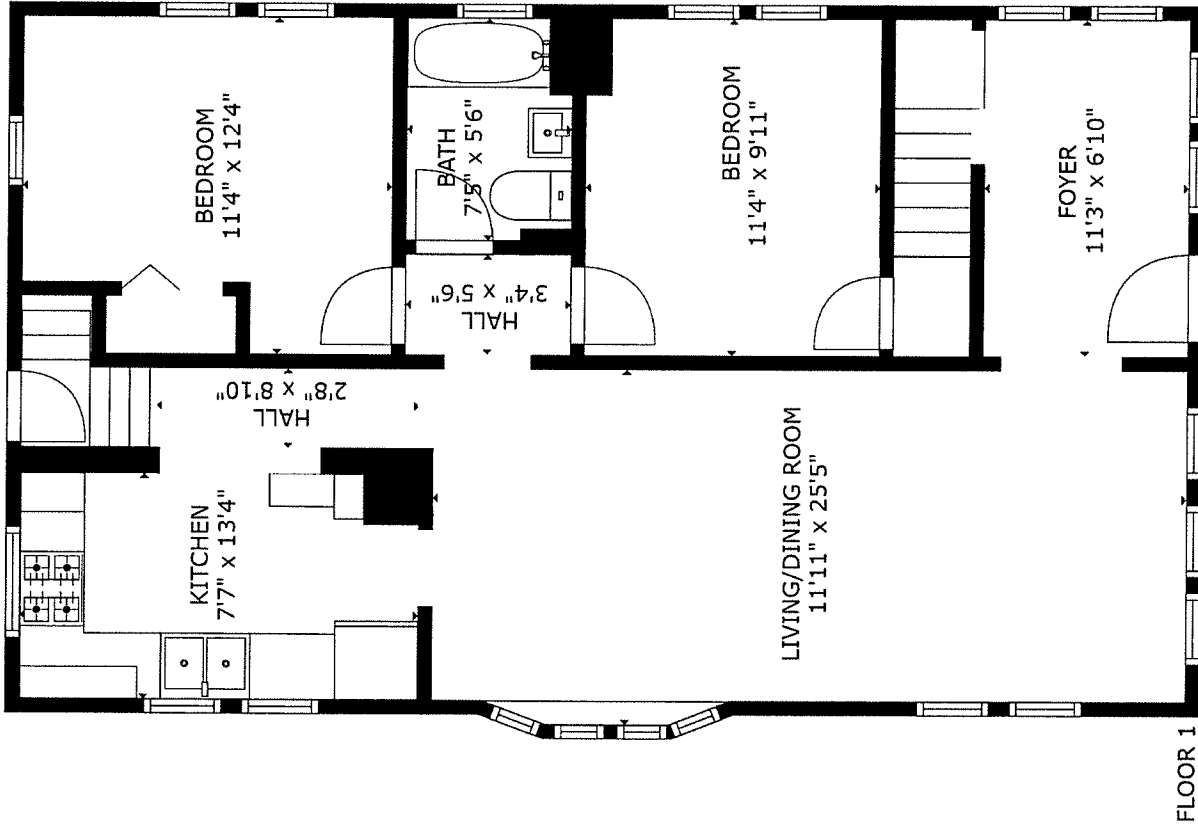
GROSS INTERNAL AREA
 FLOOR 1 : 903 sq ft, FLOOR 2 : 521 sq ft
 TOTAL: 1424 sq ft

© 2014 C/O FIRST MORTGAGE INVESTMENT SERVICES, L.P.



GROSS INTERNAL AREA
FLOOR 1 : 903 sq ft, FLOOR 2 : 521 sq ft
TOTAL: 1424 sq ft

450 North Park Street, 4th and 5th Floors, Los Angeles, CA 90012



GROSS INTERNAL AREA
 FLOOR 1 : 903 sq ft; FLOOR 2 : 521 sq ft
 TOTAL: 1424 sq ft

© 2014 Matterport, Inc. All rights reserved. Matterport, Inc.